



STORE

## Data Sheet CODESYS Profibus Slave (for EL6731-0010) SL

CODESYS Profibus Slave (for EL6731-0010) SL is a product that allows end users to integrate a CODESYS compatible controller with EtherCAT into an existing Profibus network.

### Product description

The EL6731-0010 gateway terminal from Beckhoff allows an EtherCAT enabled controller to register itself as a Profibus slave in a Profibus network. For CODESYS compatible controllers to use this functionality, they require the EL6731-0010 Profibus slave gateway. This product allows the integration of the terminal into an EtherCAT tree and the configuration directly from within the CODESYS Development System. End users of CODESYS compatible controllers with EtherCAT are therefore provided with the option for configuring their device as a Profibus slave and integrating it into existing Profibus architectures. Seamless integration provides for project engineering directly from within the CODESYS Development System.

### More information

A special device description for the EL6731-0010 gateway terminal allows integration into an appropriate EtherCAT fieldbus coupler (example: EK1100) of the CODESYS project according to the physical configuration.

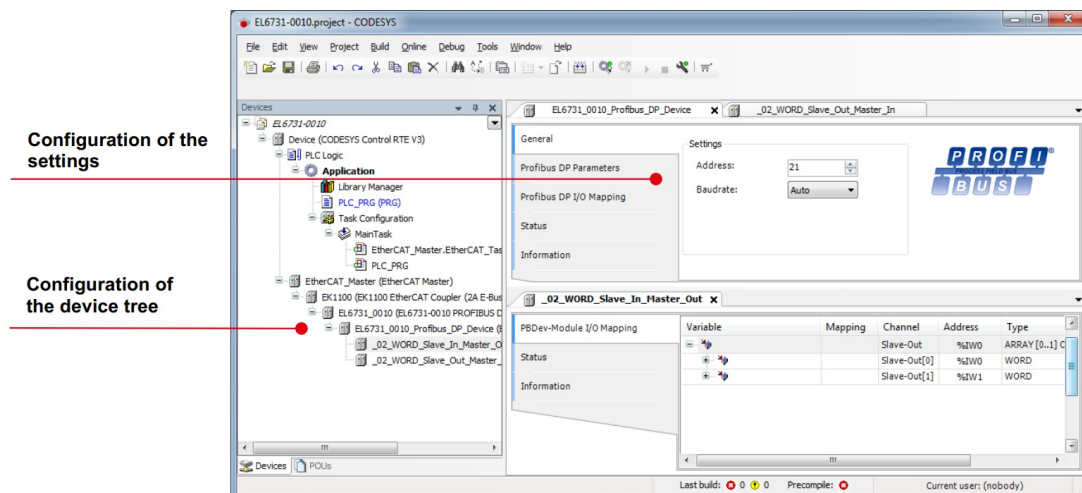
### Architecture

Typical structure of the configuration:

| - fieldbus coupler (example: EK1100)

| - EL6731-0010 | | - transition to Profibus | | - Profibus I/O modules | - Any other EtherCAT I/O modules

Process data can be exchanged between the CODESYS application and the Profibus master by means of the Profibus I/O modules. Various input and output data lengths are provided for this purpose.



Picture 1: Example of the CODESYS Profibus Slave (for EL6731-0010) SL configurator

## General information

### Manufacturer:

3S-Smart Software Solutions GmbH  
 Memminger Strasse 151  
 87439 Kempten  
 Germany

### Support:

<https://support.codesys.com>

### Item:

CODESYS Profibus Slave (for EL6731-0010) SL

### Item number:

2303000011

### Sales:

CODESYS Store

<https://store.codesys.com>

### Included in delivery:

- License key

## System requirements and restrictions

<b>Programming System</b>	CODESYS Development System V3.5.7.0 or higher
<b>Runtime System</b>	CODESYS Control V3.5.7.0 or higher
<b>Supported Platforms/ Devices</b>	Note: Use the project "Device Reader" to find out the supported features of your device. "Device Reader" is available for free in the CODESYS Store.
<b>Additional Requirements</b>	<ul style="list-style-type: none"> <li>• Available EtherCAT Master and Ethernet port on the device</li> <li>• WIBU Codemeter support</li> </ul>
<b>Restrictions</b>	-
<b>Licensing</b>	License activation optional on CODESYS Runtime Key or CODESYS Soft Key (free of charge component of CODESYS Controls)
<b>Required Accessories</b>	<ul style="list-style-type: none"> <li>• PROFIBUS slave terminal EL6731-0010 (Beckhoff)</li> <li>• Optional: CODESYS Runtime Key</li> </ul>

*Note: Not all CODESYS features are available in all territories. For more information on geographic restrictions, please contact [sales@codesys.com](mailto:sales@codesys.com).*

*Note: Technical specifications are subject to change. Errors and omissions excepted. The content of the current online version of this document applies.*